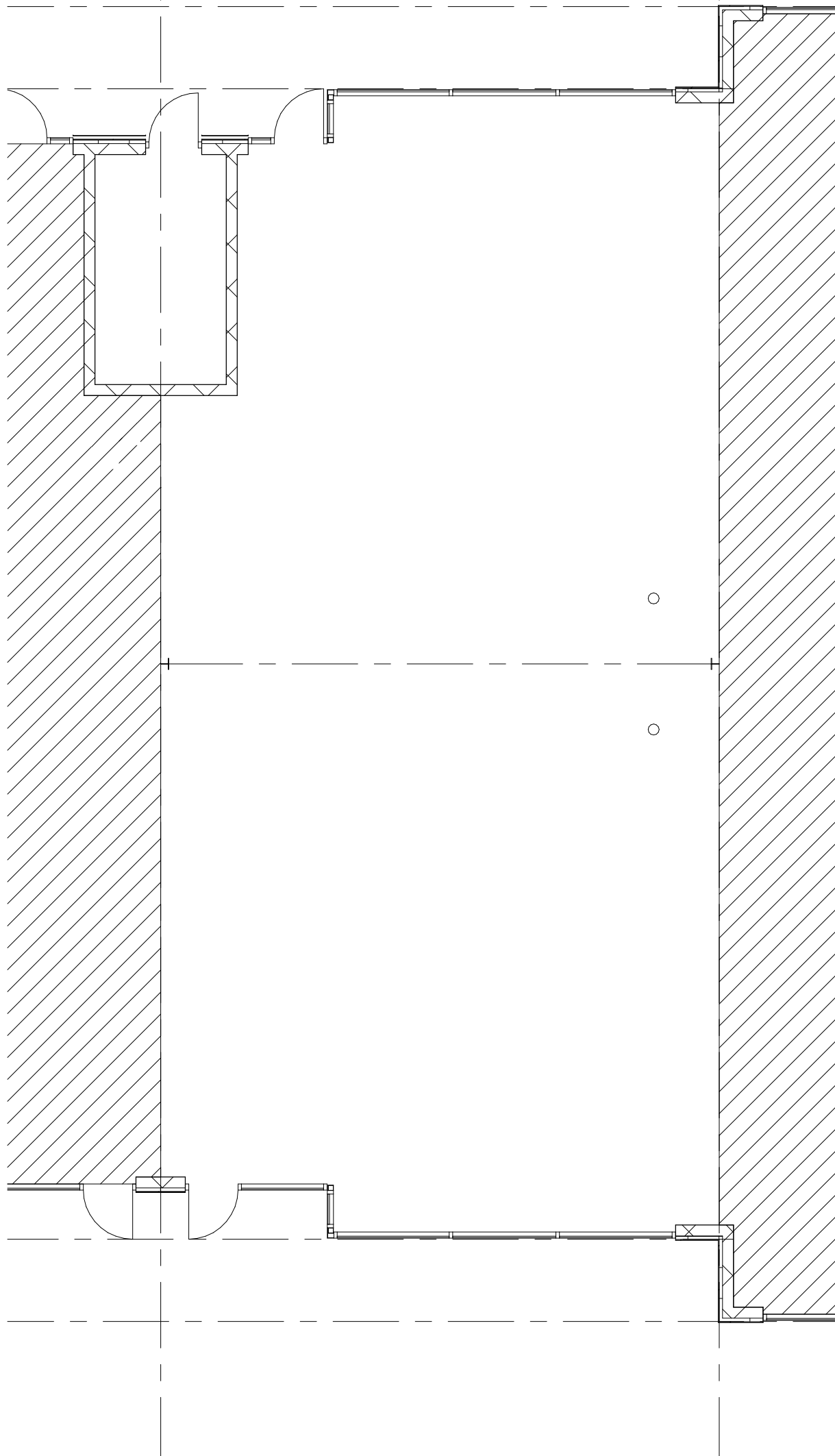


34'-0"

'G'
2,340 SQ. FT.



SCALE: 1/8" = 1'-0"
DRAWN: J. YOUNG
DATE: 04/28/17

REVISIONS:

AVAILABLE SQ. FT.
2015 W. GROVE PARKWAY
PLEASANT GROVE, UTAH 84062
BUILDING TOTAL: 25,840 SQ. FT.



ST. JOHN PROPERTIES
1982 W. PLEASANT GROVE BLVD.
SUITE D
PLEASANT GROVE, UTAH 84062
OFFICE: (801) 899-7991

AVAILABLE SQ. FT.
SUITE G = 2,340 SQ. FT.
-
-

SHEET NO.

2015